

Bloom Trail Homecoming DRESS CODE

With modesty in mind, the following dress code guidelines will be strictly enforced at the BTHS Homecoming dance.

Homecoming is Outside!!

- Sweaters and coats are encouraged.
- Dance is in October and may be cold.
- Dress weather appropriate.

Dance Dress Code For Females

- **MASKS ARE REQUIRED!**
- **No frayed, ripped, or sagging pants/ jeans**
- **No see-through fabrics**
- **No bare midriffs** Dresses must cover belly button.
- **No T-Shirts**
- **NO HEELS or cleats** (gym shoes, sandals, flat shoes, etc.)
- Modest, non-provocative, non-revealing semi-formal dresses
- Dresses cannot have extreme slits (no more than fingertip length) or short hemlines
- Dresses may not dip in the back below waistline.
- Dresses must not allow excessive cleavage to be shown.

Dress Code For Males

- **MASKS ARE REQUIRED!**
- **No frayed, ripped, or sagging pants/jeans**
- **NO HEELS or cleats** (gym shoes, sandals, flat shoes, etc.)
- Dress pants/slacks, dress jeans
- Button/Collared Shirts
- Tie – optional
- Suit/Sport Coat – optional

#1

Dresses may not be cut below the bust line.

The bust continues around your sides directly under the armpit. With arms down at your side, if flesh touches flesh below the bust line, the dress is inappropriate.



This dress IS appropriate.

BUST LINE
(on the side)

BUST LINE

UNACCEPTABLE DRESSES



#2

Dresses may be backless as long as they are not cut below the naval.



This dress meets dress code.
Please notice how the bust
is covered on the sides.

UNACCEPTABLE DRESSES



#3

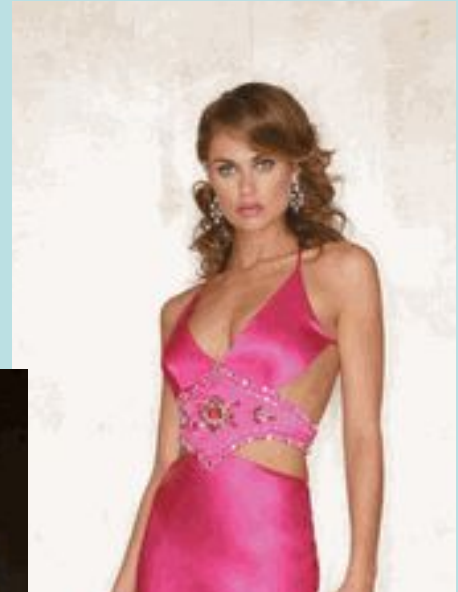
Midriffs will not be exposed.

This includes both front and side.

With arms down at your side, if flesh touches flesh in the midriff section, the dress is inappropriate.



UNACCEPTABLE DRESSES



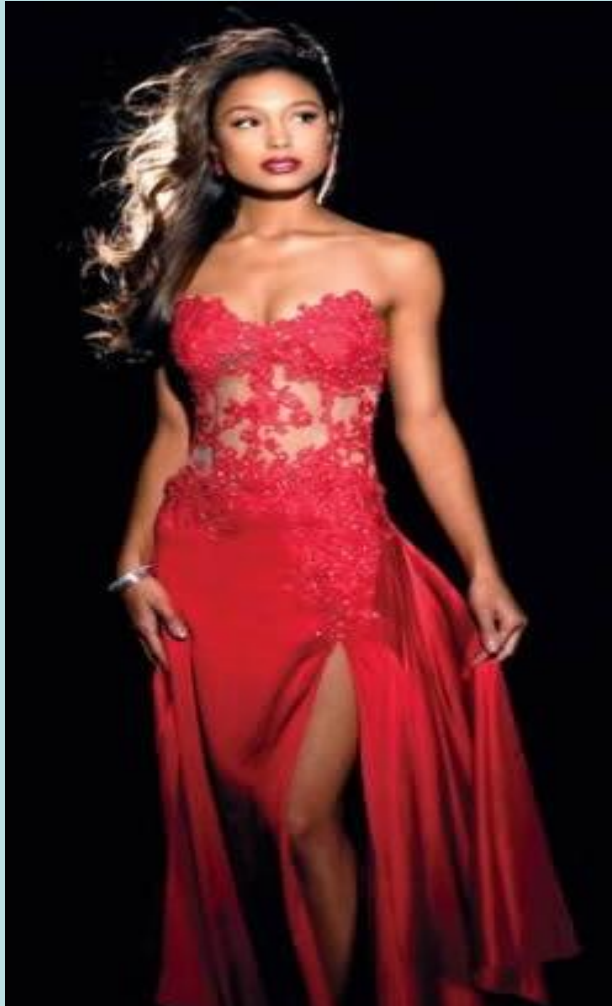
#4

Dresses may not have a slit that exceeds mid-thigh. This is fingertip length.



This dress meets dress code.

UNACCEPTABLE DRESSES

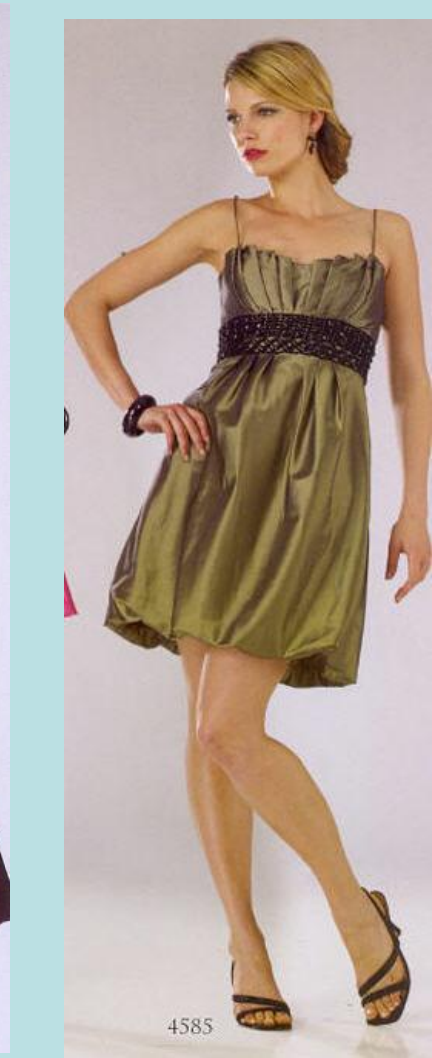


- **No cover-ups** (coats, shawls, sweaters) will be allowed over dresses that do not meet dress code.
- **Pinning and Fabric Inserts** No pinning will be allowed as an alteration for a dress if without the pins the dress does not meet dress code.
- **Fabric inserts must be sewn**, not pinned on the dress, if without the inserts the dress does not meet dress code.
- **While we will be reasonable in our interpretation of these guidelines, we want you to know that you will not be allowed into the dance if you are dressed inappropriately.**

*****Refunds will not be given for dress code violations.*****

- **Most importantly, this dress code does not limit your ability to show your style and uniqueness.**

There are many beautiful and stylish dresses that do meet dress code.



If you have any questions regarding Homecoming or the dress code, please see the BTHS website or stop by Mrs. Gomez's (2.106) or Ms. Koca's (2.406) classroom.

Be Smart.

Be Safe.

Be Respectful.

Homecoming